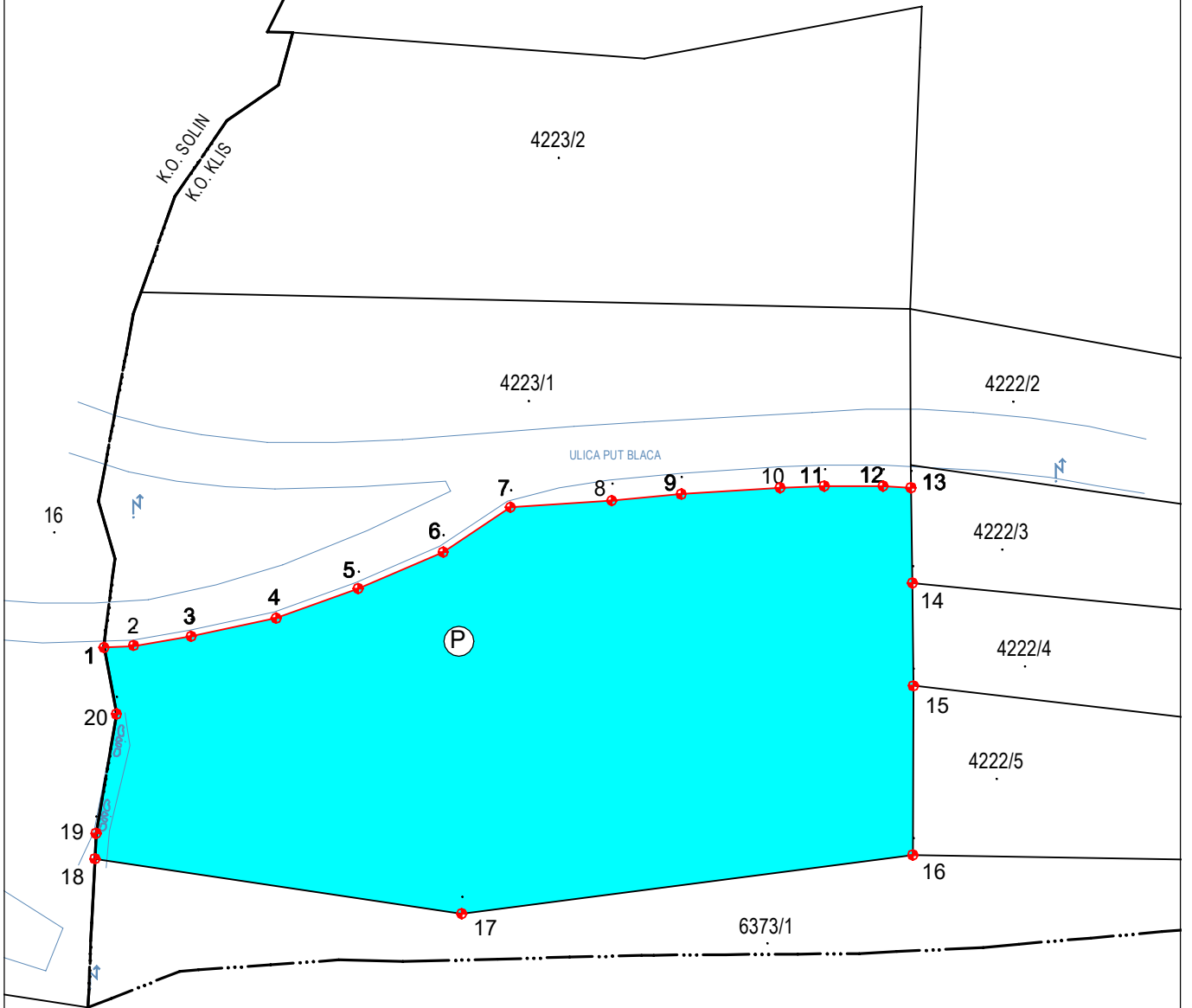




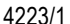


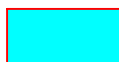
SKICA LIKOVA I POVRŠINA

Mjerilo 1:500



Kazalo:

-  topografsko stanje
-  granica po katastarskom stanju
-  granica katastarske općine
-  linija razgraničenja
-  oznaka (broj) katastarske čestice



Lik P površine 1603 m² od dijela k.č. 4223/1 omeđen točkama 1,2,3,4,5,6,7,8,9,10,11,12,13,14,15,16,17,18,19,20,1